

Squirrely Swedish Mittens

by Elli Stubenrauch (a free pattern from Elliphantom Knits)



Size: Woman's small. Finished hand circumference approximately 7.5 inches.

Yarn: Sock It to Me Essential 4 Ply; (75% superwash wool, 25% nylon; 230 yards/210 meters per 50g ball). 1 ball MC (7042, Mint Leaf) and 1 ball CC (0212, Forest).

Needles: One set of five dpns, size US 1 (2.25mm).

Gauge: 37 stitches and 41 rounds = 4" in stranded colorwork, after blocking. (The ball-band on the yarn I used reads 28-30sts/4 inches on US 1-2, if you are looking for a substitute.)

Note: This pattern differs from the mittens pictured; it has been lengthened slightly. To avoid knitting short mittens, please follow the pattern as charted.

LEFT MITTEN:

Cuff: With CC, CO 76 sts (the cuff will be turned under and sewn down inside the mitten, so leave an extra-long CO tail to use for sewing up). Divide stitches evenly between 4 needles. Join, being careful not to twist. Knit in K1, P1 ribbing for 12 rounds (if you would prefer for the sew-line "bump" to coincide with tops of the "poles" section of the chart, knit an additional 5 rounds of ribbing for a total of 17 rounds).

Lower hand: Join MC and start knitting the "poles" section from the lower right corner of chart. Knit the "tall pines," "squirrels," and "snow" sections as charted until you reach the thumb placement line on the right side of the chart.

Thumb stitches: Knit the 14 stitches that appear above the thumb placement line, and then move these stitches to waste yarn. Next round: knit to held stitches, and loosely cast on next 14 stitches in pattern.

Upper hand: Continue knitting to the end of the chart. Graft remaining stitches together to close the top of the mitten.

Thumb: Move held stitches back to the needles (these are the first 14 stitches shown on the thumb chart), join yarn and pick up and knit the next 16 stitches as represented on the Left Thumb chart (14 stitches from the 14 cast on stitches and one on either side of the thumb). Divide stitches evenly between 4 needles and knit as charted to top. Graft remaining stitches together to close the top of the thumb.

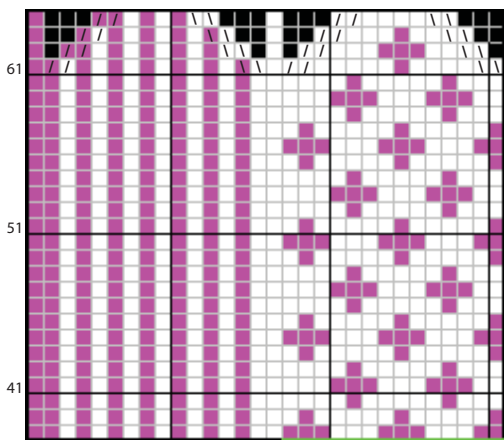
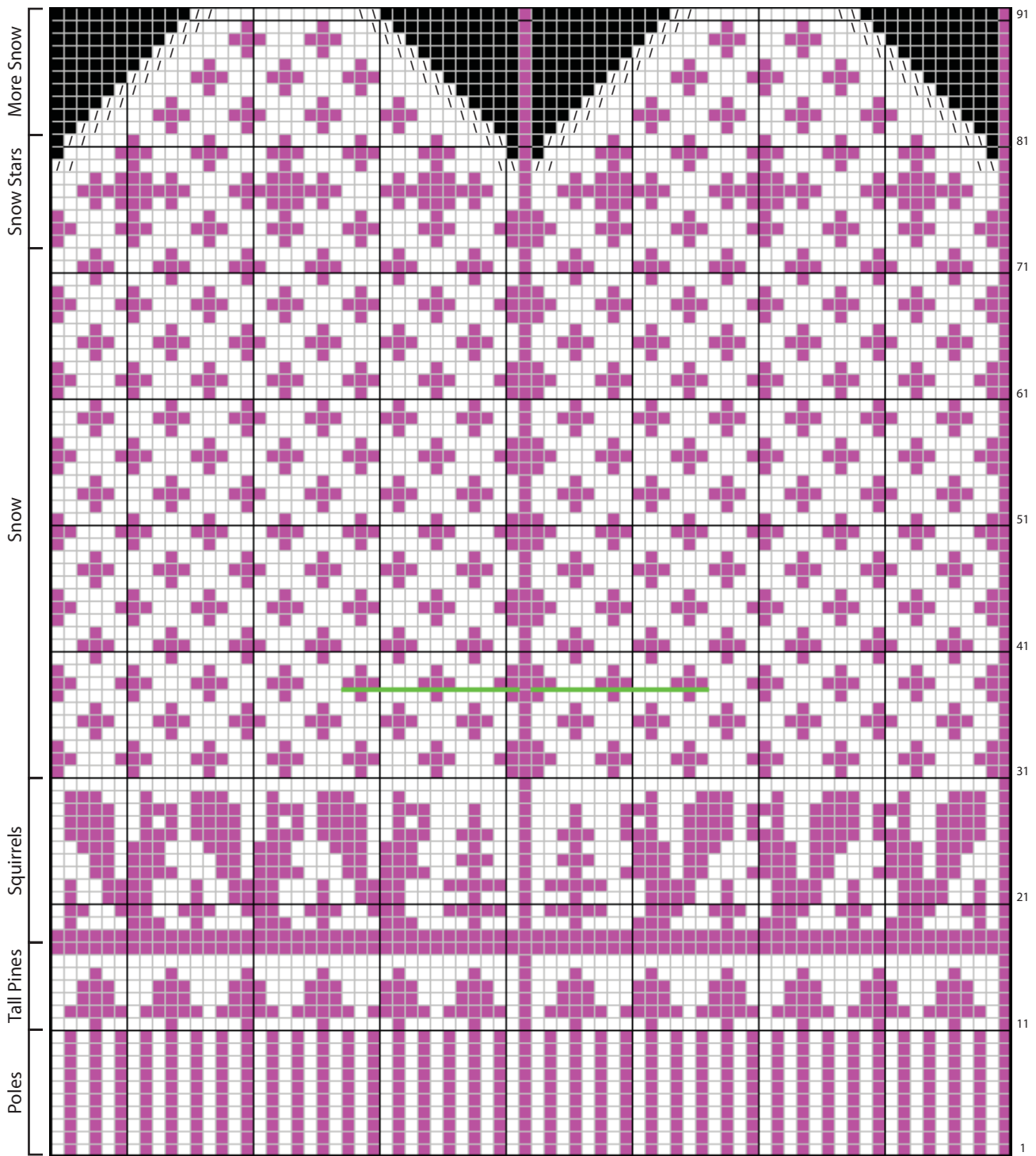
Finishing: Fold cuff under, leaving a few rows of ribbing visible from the outside, and use the CO end to sew the cuff down to the inside the mitten. Weave ends in and block.

RIGHT MITTEN:

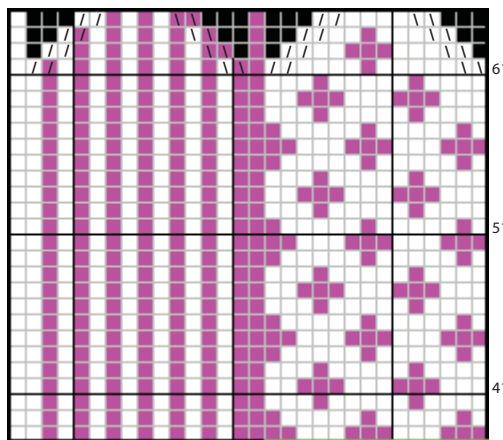
Knit as for Left Mitten, using the thumb placement line on the left side of the chart and the Right Thumb chart.

Snow Star motif and general inspiration from [The Swedish Mitten Book](#) by Inger and Ingrid Gottfridsson.

© 2006 Elliphantom.com. All rights reserved. For personal, non-profit use only, please.



Right Thumb



Left Thumb

Explanation:

- MC
- CC
- No Stitch
- K2tog
- SSK
- Thumb Placement

© 2006 Elliphantom.com
 All rights reserved. For personal, non-profit use only, please.