

HERRINGBONE MITTENS WITH POMS



SIZES M: Woman's Medium / Man's Small
[L: Woman's Large / Man's Medium]

FINISHED MEASUREMENTS
8.25" [9"] in circumference and 9.5" [10.25"] long

YARN • For M – Cascade 220 (100% wool; 220 yards / 3.5 oz.): 1 skein MC (7830 Coral) and 1 skein CC (8010 Natural)
• For L – Brown Sheep Lamb's Pride Worsted (85% wool / 15% mohair; 190 yards / 4 oz.): 1 skein MC (M-06 Deep Charcoal) and 1 skein CC (M-130 Silver Sliver)

NEEDLES • For M: One set each of size 4 (3.5 mm) and size 6 (4.0 mm) double pointed needles
• For L: One set each of size 5 (3.75 mm) and size 7 (4.5 mm) double pointed needles
Adjust size as needed to achieve gauge

NOTIONS Crochet hook, size US H/8 (5 mm). Waste yarn, yarn needle, safety pins

GAUGE 24 [22] sts and 25 [23] rows = 4" in colorwork, after blocking

NOTES

- The pattern is the same for both sizes. Try experimenting with other gauges if you want a differently-sized mitten.
- Round 14 is an optional eyelet round. Later a crocheted cord is run through these eyelets and the pompon is attached. If knitting these mittens without pompons, or if you would prefer to attach the pompon directly to the mitten, this row may be knitted without eyelets.
- M1-L Make one stitch by picking up the MC yarn between the two stitches of the previous row, and knitting into the back of this loop so that it twists to the left.
- M1-R Make one stitch by picking up the MC yarn between the two stitches of the previous row, twisting, and knitting into the front of this loop so that it twists to the right.

CUFF Using smaller needles, CO 50 sts in MC and distribute between 4 dpns.

Round 1: Switch to CC and knit to end of round. (Note: this would normally be the joining round, but since we are switching colors we won't join until round 2. If you find it helpful, you can tie on the new yarn and join on round 1.)

Round 2: Join for working in the round, being careful not to twist; begin k1, p1 ribbing.

Rounds 3 – 12: Continue ribbing as established.

Round 13: Switch to larger needles; Join MC; knit 1 round in stockinette.

Round 14: (Optional eyelet round—see note.) K1 *K2tog, yo, k3; repeat from * 9 times; k2tog, yo, k2.

HAND Rows 1 – 5: Begin knitting from chart at row 1, working colors as indicated.

Row 6: Begin increases for thumb as charted. The increases are worked on either side of the stitch that originally began the row.

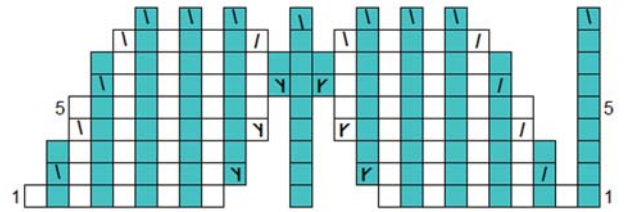
Row 24: Knit to thumb; transfer thumb stitches to waste yarn; continue knitting hand as charted.



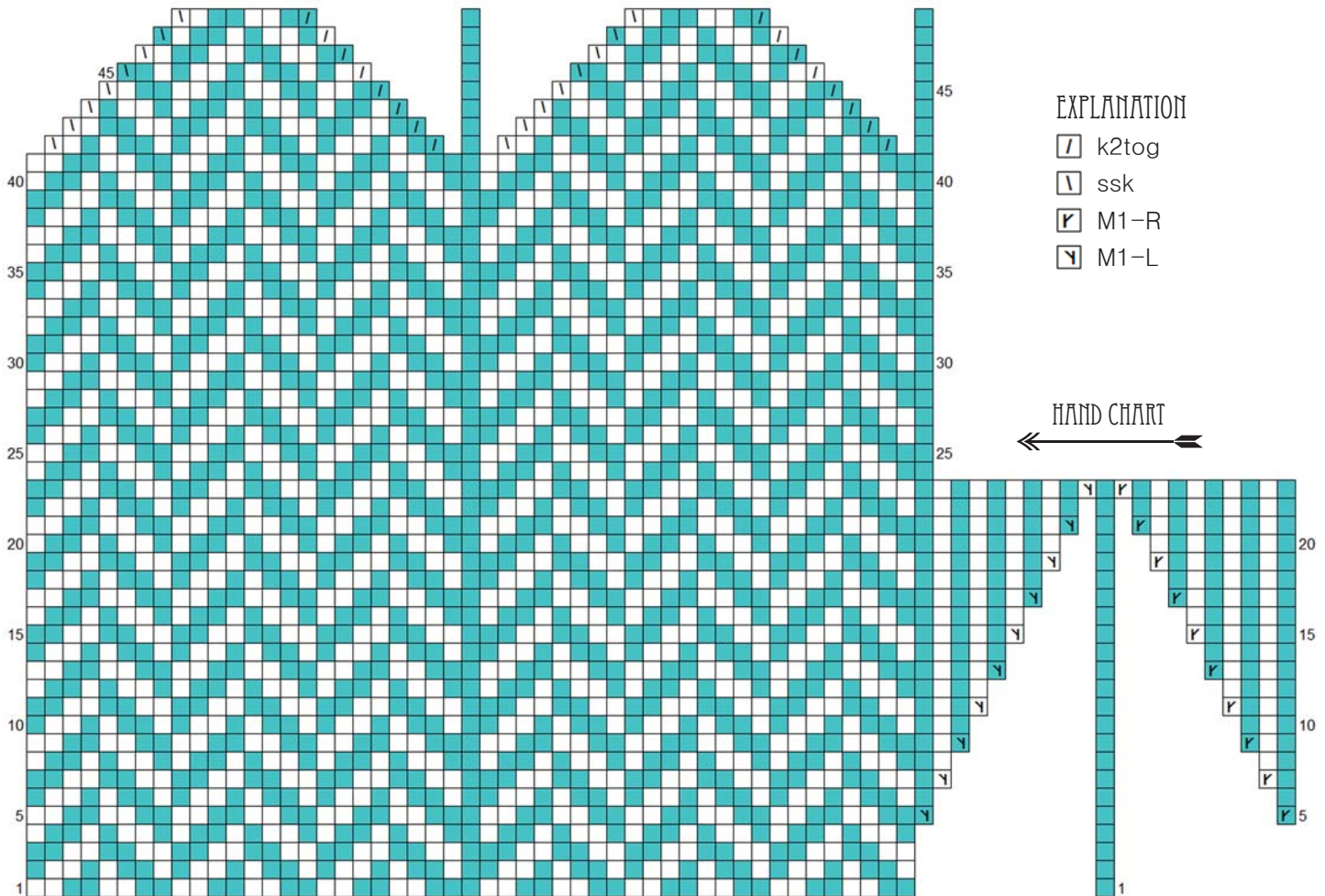
Row 42: Begin decreases for top of mitten (note: decreases begin approximately 1" before the top of the mitten. To adjust the length, shorten or lengthen by adding or subtracting an even number of rows). After the final row, break yarn and graft the top of the mitten closed using MC.

THUMB Move thumb stitches from waste yarn onto dpns. Knit as charted, leaving a length of MC yarn for sewing up the gap between the thumb and body of the mitten. After the final row of the chart, break yarn and draw MC through remaining stitches.

FINISHING Close gap between thumb and mitten using MC tail. Weave in all remaining ends. Using MC, crochet two 10" chains; break yarn; secure live stitch temporarily with a safety-pin. Using MC and CC, make two pompons (for instructions, see <http://www.kategilbert.com/howto/pompon.html>) Thread crocheted cord through eyelets; adjust length as needed (ideally it should be just loose enough for your hand to slide easily into the mitten); secure live stitch and tie ends of cord together. Knot ends of cord and tails of pompon securely together and clip ends. Respect The Pom.



↑ THUMB CHART



EXPLANATION

- ⎓ k2tog
- ∨ ssk
- ⌞ M1-R
- ⌟ M1-L

← HAND CHART